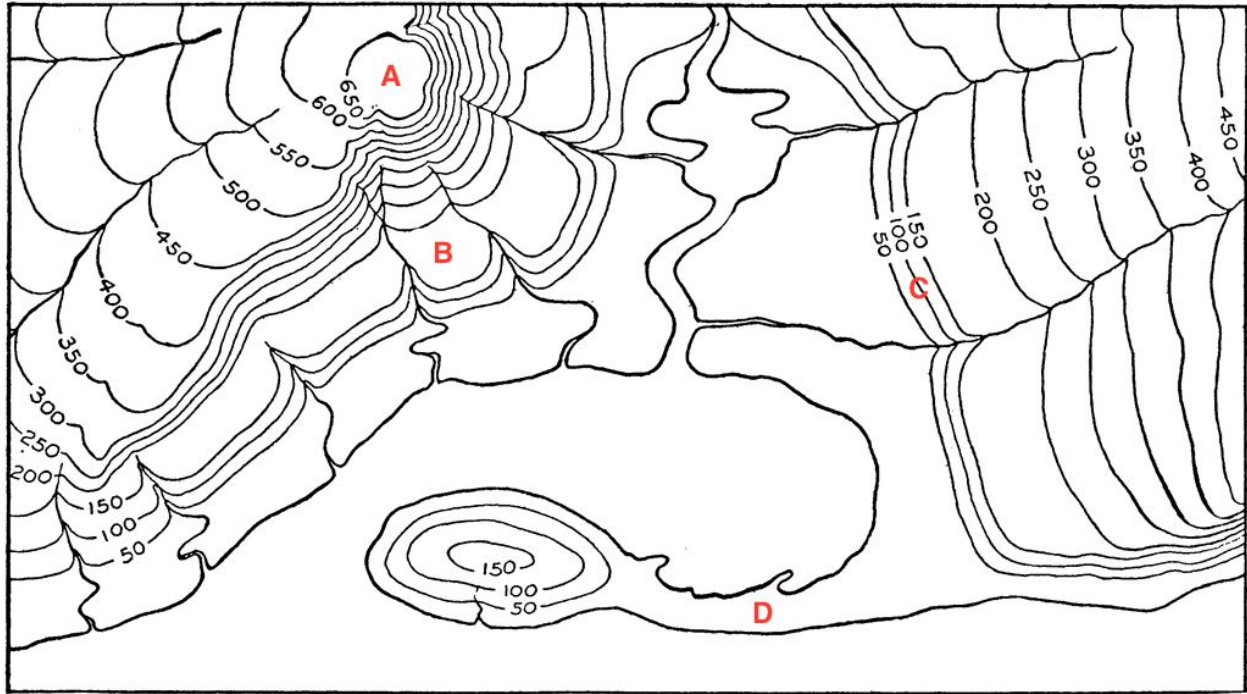


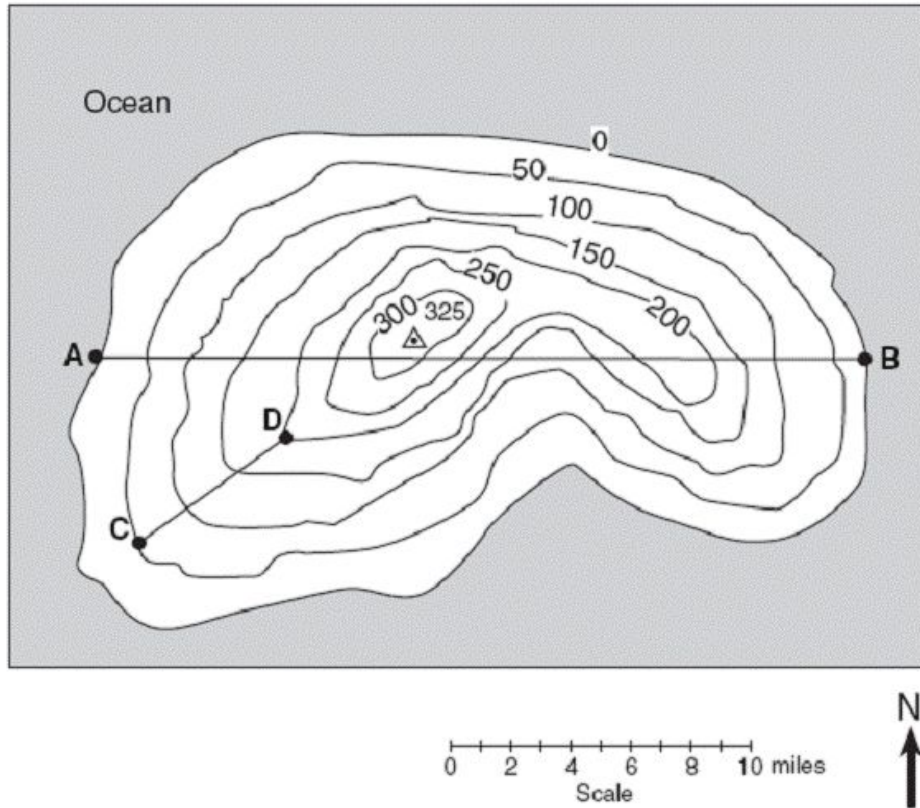


Lesson #6 Answer Key

Topographic Map Formative



- [1] Order letters A, B, C, D from lowest elevation to highest elevation.
D, C, B, A
- [2] What is the value of the contour intervals?
50 feet
- [3] What is the elevation of C?
100 feet
- [4] What is the lowest and highest possible elevation for B?
151 → 199 feet
- [5] What is the lowest and highest possible elevation for A?
651 → 699 feet
- [6] What is the lowest and highest possible elevation for D?
1 → 49 feet
- [7] Does B represent a steep slope or a gradual slope?
Gradual Slope



- [8] What is the distance between A and B?
25 miles
- [9] What is the distance between C and D?
6 miles
- [10] What is the highest elevation on this map?
325 feet
- [11] What are the contour intervals on this map?
50 feet